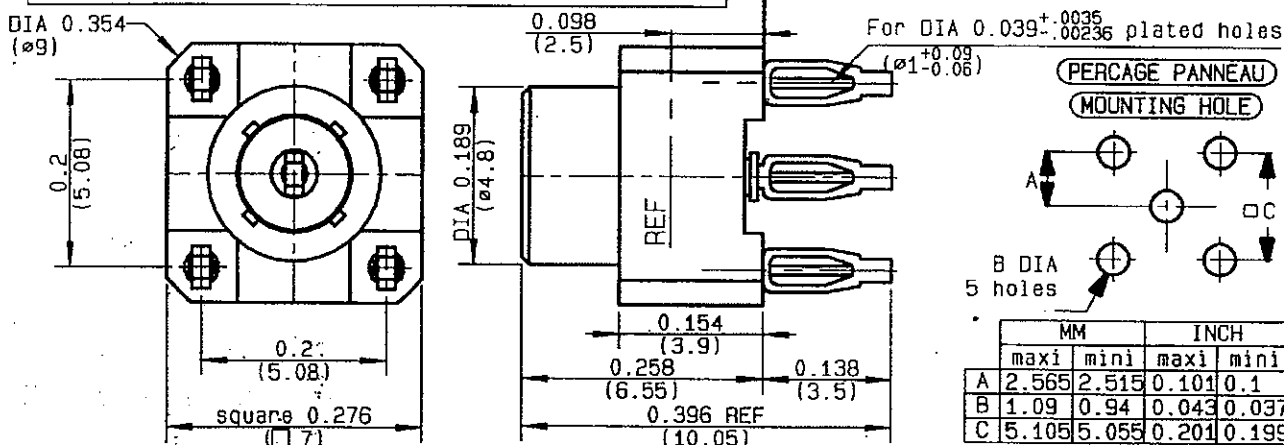


**STRAIGHT JACK RECEPTACLE FOR PCB
PRESS FIT LEGS**

R113.416.045
SERIES **MCX**

With R113.436.045 the mounted length between the flanges is $.449 \pm .008$
(Cote de montage entre panneau avec le R113.436.045 = 11.4mm ± 0.2 mm)



NOMINAL IMPEDANCE	50	Ω
FREQUENCY RANGE	0-6	GHz
TEMPERATURE RATING	-40/+85	°C
V.S.W.R	1.05 + .05 x F(GHz)Maxi	
RF INSERTION LOSS	0.03 √F(GHz)	dB Maxi
VOLTAGE RATING	335	Veff Maxi
DIELECTRIC WITHSTANDING VOLTAGE	1000	Veff Mini
INSULATION RESISTANCE	1000	MΩMini
HERMETIC SEAL	NA	Atm.cm ³ /s
LEAKAGE (pressurized only)	NA	
MECHANICAL DURABILITY	500	Cycles
WEIGHT	1.51	gr
SPECIFICATION		

CABLES :

OTHERS CHARACTERISTICS

***COAXIAL TRANSMISSION LINE ONLY**

CABLE RETENTION	NA	N Mini
CENTER CONTACT RETENTION		
Axial force - mating end	10	N Mini
Axial force - opposite end	10	N Mini
Torque	NA	cm.N Mini
RECOMMENDED TORQUES		
Mating	NA	cm.N
Panel nut	NA	cm.N
Clamp nut	NA	cm.N

CONNECTOR PARTS	MATERIALS	FINISH	(all values are given in micrometers)
BODY	BRASS	NICKEL 2	
OUTER CONTACT			
CENTER CONTACT	BERYLLIUM COPPER	GOLD 1.3 OVER NICKEL 2	
INSULATOR	PTFE	-	
GASKET		-	
OTHERS PIECES	PHOSPHOR BRONZE	TIN 3 OVER NICKEL 2	

PERR:

ISSUE
0540B

CREATION DATE
12-JUN-97

FILE PART-NUMBER
96-0104-404

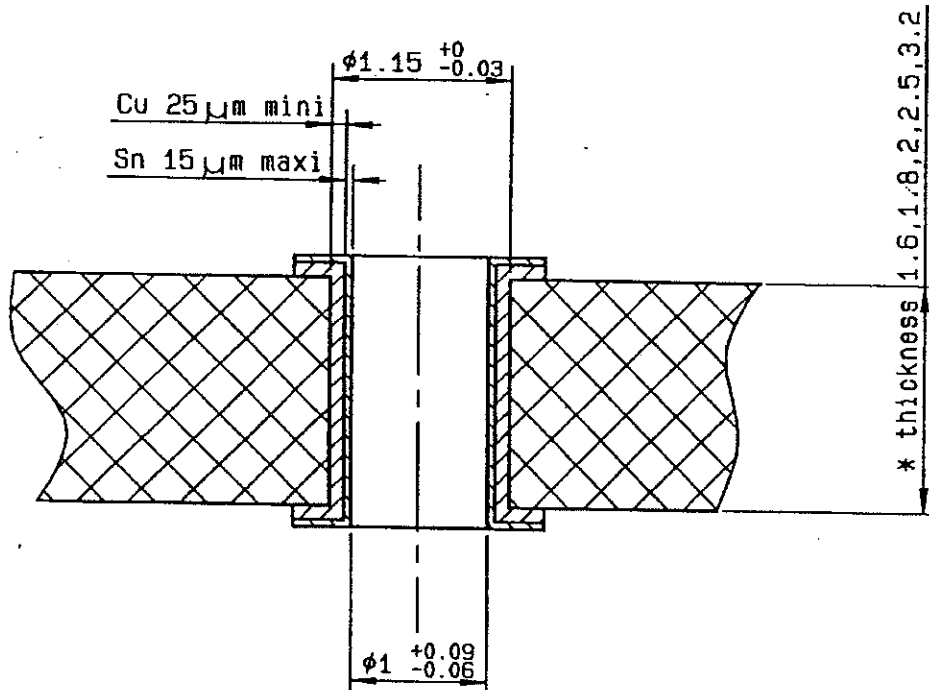


RADIALL®

The information given here is subject to change without notice.
Design changes may be in order to improve the product.

Connect to the future

PC BOARD MATERIAL	GLASS FIBRE EPOXYD NEMA:G10,G11,FR4,FR5 DIN 40802 : EP-GC 01 , EP-GC 02
THICKNESS	1.6 mini
HOLE	FOR 1mm COMPLIANT PIN
BORE-HOLE	$\phi 1.15 \text{ } 0/-0.03$
COPPER	$> 25 \mu\text{m}$
TIN	$< 15 \mu\text{m}$
FINAL DIAMETER	$\phi 1 \text{ } +0.09/-0.06$

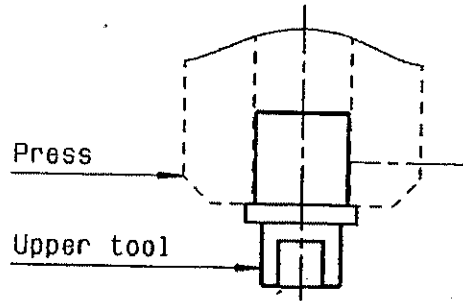


This information is given as an indication . In the continual goal to improve our products , we reserve the right to make any modifications judged necessary .

MOUNTING INSTRUCTIONS ON THE PCB
STRAIGHT CONNECTORS WITH PRESS-FIT TERMINATION

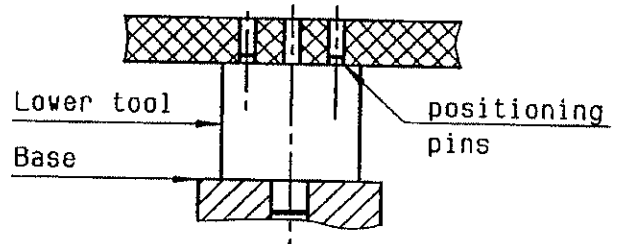
①

Slide the upper tool (R282.878.141) into the machine (press) .



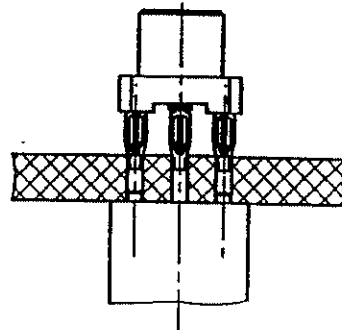
②

Slide the lower tool (R282.878.523) into the base and place correctly the PCB on this tool .(positioning pins)



③

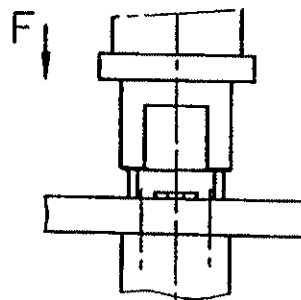
Place correctly the straight connector with press-fit termination on the PCB and reduce the press-fit extremity in the holes of the PCB .



④

Push on the top (about 500 N) until total insertion .(in direction F)
(Push connector body until it bottoms against PCB) .

Remove the connector and the PCB assembly .

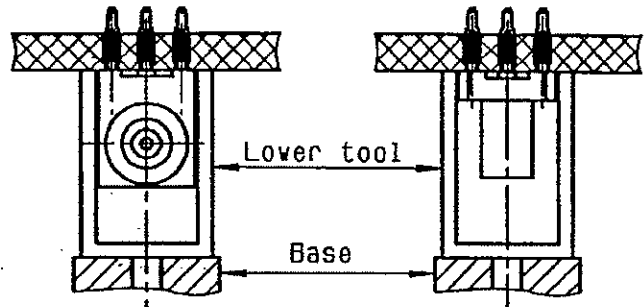


REPLACEMENT INSTRUCTIONS ON THE PCB
STRAIGHT AND RIGHT ANGLE CONNECTORS WITH PRESS-FIT TERMINATION

①

Place correctly the PCB and the connector on lower tool (R282.878.533)

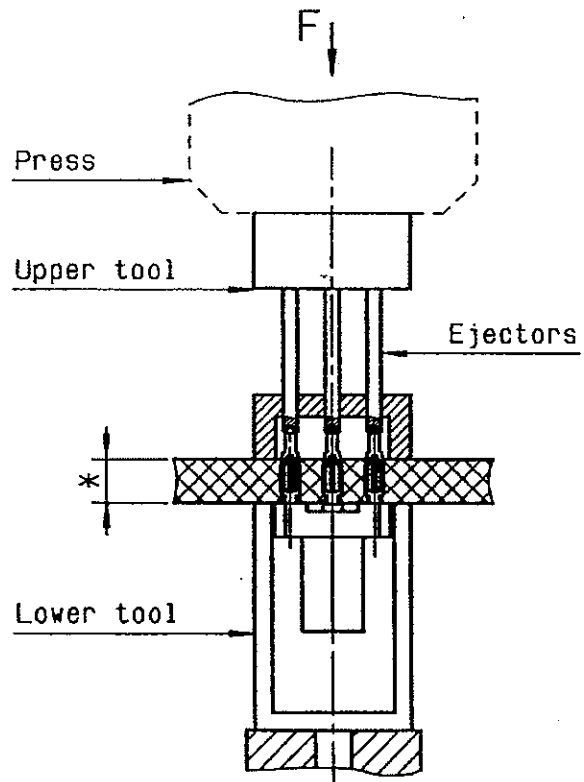
-
-
-



②

Place the upper tool (R282.878.513) at the back of the connector and place correctly the ejectors :

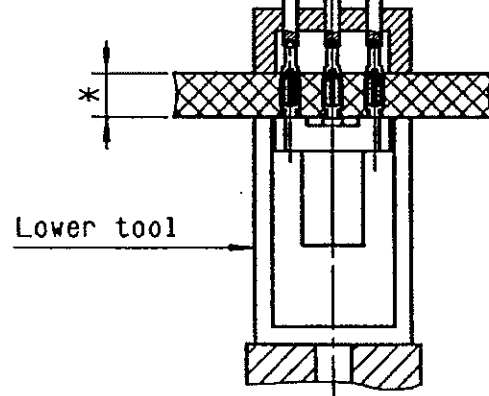
- on Press-fit pins (if PCB thickness < 3.5mm)
- in the holes of the PCB (if PCB thickness > 3.5mm)
-



③

Press the back of the upper tool to force the connector (about 500N) into connector slide down onto lower tool .

-
-
-



④

CAUTION !

It's impossible to use a COAXIPRESS a twice .

A plated hole of the PCB can't be used over 3 times .

-

* panel thickness: 1.6 mini